



Sharon Lutheran Church  
1720 S 20th St  
Grand Forks, ND 58201

**Join us for in-person worship**

**Sunday Morning 9:00 in the Sanctuary and Celebration Hall  
and 10:30 in Celebration Hall  
and Wednesday Evenings in Celebration Hall 6:00**

Worship will also be available online on our website: [www.sharonlutheran.org](http://www.sharonlutheran.org)

## Sharon Lutheran Staff

Interim Administrative Pastor Karen Young Trenne.....([pastorkaren@sharonlutheran.org](mailto:pastorkaren@sharonlutheran.org))  
Deacon Jamie Travers .....([jtravers@sharonlutheran.org](mailto:jtravers@sharonlutheran.org))  
Associate Pastor Tawanda Murinda.....([tmurinda@sharonlutheran.org](mailto:tmurinda@sharonlutheran.org))  
Office Manager.....Missy Thompson ([mthompson@sharonlutheran.org](mailto:mthompson@sharonlutheran.org))  
Administrative & Media Assistant .....Barb Jorgenson ([bjorgenson@sharonlutheran.org](mailto:bjorgenson@sharonlutheran.org))  
Finance Manager.....Stephanie Leighton ([sleighton@sharonlutheran.org](mailto:sleighton@sharonlutheran.org))  
Dir. Elementary, Middle School, Youth Music.....David Berger ([dberger@sharonlutheran.org](mailto:dberger@sharonlutheran.org))  
Director of Christian Education.....Cheryl Nyhlen ([education@sharonlutheran.org](mailto:education@sharonlutheran.org))  
Dir. High School Youth, Young Adults.....Steve DeKrey ([sdekrey@sharonlutheran.org](mailto:sdekrey@sharonlutheran.org))  
Education & Youth Assistant.....Heather Peters ([hpeters@sharonlutheran.org](mailto:hpeters@sharonlutheran.org))  
Director of Music Ministries.....Roxanne Gessler ([rgessler@sharonlutheran.org](mailto:rgessler@sharonlutheran.org))  
Organist.....Sue Kerr & Carolyn Tunseth  
Sanctuary Choir Director.....Jack Boyer  
Custodian.....Dan Kuzel  
Office.....[office@sharonlutheran.org](mailto:office@sharonlutheran.org)

**Church Office Summer Hours**

**Monday - Thursday 8:30am to 5:00pm  
Friday 8:30am to Noon**

August 2022



# Sharon Sharings

Monthly Newsletter of Sharon Lutheran Church

1720 South 20th Street, Grand Forks ND | [www.sharonlutheran.org](http://www.sharonlutheran.org) | 701-772-3122

## What is a family?

*“So then, whenever we have an opportunity, let us work for the good of all, and especially for those of the family of faith.” – Galatians 6:10*

What is a family? Families come in all shapes and sizes. All of us have some kind of family and we all are members of different kinds of families. One of my favorite books is Family Ministry – A Comprehensive Guide by Diana Garland. In it she says, “A family is any group of 2 or more people in an emotional, social, and often biological system where everyone is affected by one another.”

In Galatians 6 Paul talks about the family of faith. In other words, he means the church. At Sharon we are a family of families gathered together in a spiritual, emotional, social, and sometimes biological system where everyone is affected by one another. Diana Garland talks about how in the church, families learn about and become more skillful in the disciplines of family life – listening and communicating, forgiving and repenting, handling anger and problem-solving, balancing intimacy and autonomy, disciplining and loving one another, and ministering inside & outside the family’s boundaries. In his New Testament letters Paul tells us that we live this out as disciples of Jesus in working for the good of all inside and outside of the faith family. As the church we are a faith-family, a family of faith, a family of believers where it is everyone’s responsibility to care for everyone. In this family we learn how to live life together.

One of the traditions of households and families is to do family photos. They can be both fun and challenging sometimes, but the end results are always precious memories. Starting in August we are going to take family of faith photos at Sharon. It has been 5 years since the last directory, so there have been a lot of changes and new members since then. The church directory is more than just a collection of photos. It is a way for us to build relationships and to help us live together as a family of faith. Universal Church Directories will be taking the pictures. This is a quote from their promotional materials:

Celebrating faith. Connecting families. Sharing hope. When people enter the doors of our church, they are looking for a place to belong. Our directory brings us together to develop new relationships, connect with our own families and reconnect with those we haven’t seen in a while. Join us for this “Connections Event: and be part of what God is doing right here at our church!

Our family of faith is not complete without you! And our church directory is not complete without you! We really hope that your household will take part. You can find more details in this newsletter about how to take part starting in August and going into October. Please gather your household and come get your photo taken! Every household who has their photo taken gets a free 8x10 portrait and a free directory. But it is also so much more than that. It is a way for us to get to know each other. It is also a helpful tool for new staff to get to know you as well. It is a memory book and useful tool for communication. I invite you to take this opportunity and work for the good of all, especially those in your family of faith at Sharon Lutheran Church.

~Deacon Jamie Travers



## Red Willow Quilt Auction to be held Saturday, August 27, 2022

Red Willow Bible Camp, Binford, ND  
 10:00 Quilts available for viewing and Silent Auction opens  
 11:00-12:30 Lunch  
 1:00 Live Auction  
 2:30 Silent Auction closes, drawing for raffle quilt (raffle tickets \$5 each)



## The Sharon Lutheran Church Rummage Sale is returning on Friday, August 26!!!

So pack up all your treasures and get ready to volunteer!

Here is some information that you should know:

1. There are **3 days** that you can drop off your donations:

Monday, Aug 22, 10 am - 5 pm

Tuesday, Aug 23, 10 am - 7 pm

Wednesday, Aug 24, 10 am - 6 pm

2. You will be asked to place your items in the appropriate rooms by category so consider dividing up your items accordingly.

3. We are accepting donations of kitchen items, knick knacks, linens, books, gently-used clothing, toys, games, books, small furniture items, and small appliances in working condition.

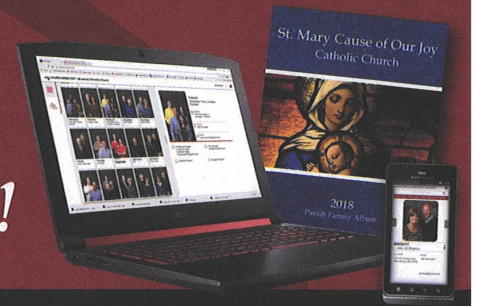
**New this year: The Sharon Specialty Boutique! This is where we will sell**



**our brand name, excellent /new condition and special items!**

4. We are unable to accept computers, TVs, large appliances, large furniture, pianos (electric keyboards are fine), large exercise equipment, infant car seats and cribs home-recorded videos and clothing that is dirty, stained or has “unfashionable” holes.

*Dear Church family,  
 It's time for a New Directory!*



*Celebrating faith.  
 Connecting families.  
 Sharing hope.*

When people enter the doors of our church they are looking for a place to belong. Our directory brings us together to develop new relationships, connect with our own families, and reconnect with those we haven't seen in a while. Join us for this “Connections Event” and be part of what God is doing right here at our church!

*Directory Committee*

## Connections Event

**Our church directory will not be complete without you. Join us to celebrate faith and family with our new church family album.**

- Schedule your professional photography session when you stop by the sign-up table at the church or simply go online and follow the instructions below. If we don't see your name on our list of appointments, you will receive a phone call inviting you to participate.
- Everyone who is photographed by Universal will receive a complimentary 8 x 10 portrait and a directory!
- Universal provides a complete professional portrait studio right here at our church! You'll enjoy a variety of poses, backgrounds, portrait sizes, finish and framing options AND have the opportunity to purchase portraits to give to family and friends.

**Set your appointment with Universal today!**



*Gathering families,  
 Connecting generations.*



### Sharon Lutheran's dates of photography are:

August 2 & 3	2:00-8:30 pm
September 27-30	2:00-8:30 pm
October 1	10:00 am - 4:00 pm
October 4-7	2:00-8:30 pm
October 8	10:00 am - 4:00 pm

To register for your photography session, simply go to: **www.ucdir.com**, click on “**schedule appointment**,” enter our church code: **ND111**. Our password is **photos**. Or you may contact the church office at 701-772-3122.





Amount needed in Operating Revenue each month per approved 2021-2022 is \$90,567

Revenue	June Actual 2021-2022	YTD Actual 2021-2022
Current Ministry Gifts	\$81,489	\$834,618
Loose/Misc. Offering Gifts	\$674	\$12,220
Operating Fund Memorial Gifts	\$-	\$70
Church School, Confirmation & VBS Registrations	\$575	\$10,562
Benevolence Gifts	\$716	\$12,067
Other Gifts and Donations	\$4,224	\$34,895
<b>2021-2022 Total</b>	<b>\$87,678</b>	<b>\$904,432</b>

	June Actual 2021-2022	YTD Actual 2021-2022
Operating Expenses	\$70,548	\$845,955
Mortgage Debt Reduction	\$4,822	\$72,461
<b>Total Expenses</b>	<b>\$75,370</b>	<b>\$918,416</b>

Revenue Exceeding Expenses	\$12,308	\$(13,984)
----------------------------	----------	------------

**June Designated gifts received:**

Capital Campaign-GIFT	\$6,563
Noisy Offering-Northlands Rescue Mission Picnic	\$256
Fellowship Donations	\$154
Undesignated Memorials	\$150
Building & Grounds Donations	\$150
Thrivent Choice Dollars	\$35
Pastor Lynn Ronsberg ELCA Scholarship Fund	\$755
Elevator Donation	\$5,000
Faith Formation Donations	\$36
Church School Benevolences	\$4
<b>Total</b>	<b>\$13,103</b>

**For those on the go, here's an easy way to donate to Sharon Lutheran Church using your cellphone!**

Simply text "SHARON1720" to 73256. Click the link sent to you, choose which fund you'd like to donate to, and complete your payment information.

If you have any questions, please contact the church office at 701-772-3122 or email [office@sharonlutheran.org](mailto:office@sharonlutheran.org)



## Memorials

**In memory of David Straus:** Bruce & Cheryl Nyhlen

If you shop on Amazon, Please use this link:  
**<https://smile.amazon.com/ch/45-0231628>**

A portion of all sales are returned to Sharon Lutheran Church to support ministry and mission **AT NO ADDITIONAL COST TO YOU!**

# Faith Formation Ministries

August 2022 News

## Greetings and Encouragement to you all!

It's August! That means fall programming is right around the corner! I look forward to seeing all our High Schoolers and Young Adults again! I hope everyone is enjoying this last bit of summer vacation!--**Steve**

I hope you are having a wonderful summer filled with adventure, relaxing, new experiences, familiar places, laughter, and lots of time outside! It is hard to believe that we will all be back together again in just a few short weeks - I can't wait to see all of you! **Dave**

As I contemplated what to write for this section, my eyes were drawn to a page tucked under the plexiglass on top of my desk. It reads:

14 Ways to Pray for the Kids You Serve  
 -Pray that kids will come to know Christ as Savior.  
 -Pray that they will love God with all their hearts.  
 -Pray for their parents and families.  
 -Pray that they will choose the right kind of friends.  
 -Pray for spiritual stability during tough times.  
 -Pray for the needs of their hearts that you may not know about.  
 -Pray for physical protection in their lives.  
 -Pray that kids will love God's Word.  
 -Pray for their continued connection to the body of Christ.  
 -Pray that kids will find their identity and worth in Christ and not in our world.  
 -Pray that God will give them compassion for others.  
 -Pray that they will have integrity in all areas of their lives.  
 -Pray that they will look for ways to serve the Lord.  
 -Pray that kids will learn to pray too!

It seems these prayers could be said for us all, as we are all kids in God's kingdom. May you enjoy what remains of summer to be refreshed and renewed for your faith journeys.

Grace and Peace. --**Cheryl**

## WEDNESDAY FELLOWSHIP MEALS SURVEY

Please fill out this short two-question survey regarding the feasibility of Wednesday Fellowship Meals for this program year. Your input is extremely valuable as we continue our planning. Thank you!

Survey Link: [tinyurl.com/WFMsurvey2022](https://tinyurl.com/WFMsurvey2022)

## Upper Elementary and Middle School News

**If you have not yet registered for 2022-2023 church school or 6th-10th grade Confirmation, you can find the registration link on the Sharon Lutheran website at <http://www.sharonlutheran.org/eventreg>**

**Watch for more information regarding our middle school Castaway retreat, the Summer 2023 middle school mission trip, 5G (weekly fellowship program for 6th-8th graders), and 3-4-5 Alive! (weekly fellowship program for 3rd-5th graders) in the September newsletter!**

## Needs for church school 2022-2023:

Hand wipes (not for cleaning, e.g Wet Ones)  
 Adult sized scissors  
 WASHABLE markers  
 We appreciate any and all donations!

HIGH SCHOOL NEWS

**Confirmation Registration** - All families who will have 9th grade and 10th grade students in the fall should have them registered for Confirmation. You can find the registration link on the Sharon Lutheran website at <http://www.sharonlutheran.org/eventreg>

**9th Grade confirmation is in need of adult leaders.** Please let Steve know if that is something you are able to volunteer for. 9th Grade Confirmation runs from 7:15pm-8:15pm.

**High School Orientation Night** - All High School confirmation grades 9,10 and 11 will have orientation on Wednesday August 24th beginning at 7pm. The Schedule is as follows.

9th Graders/Parents/Guardians - 7pm  
10th Graders/Parents/Guardians - 7:30pm  
11th Graders/Parents/Guardians - 8pm  
Please make every effort to attend these meetings so that you have an idea of what your fall looks like, expectations, and important dates.

**Students entering 10th grade** - Please give some thought as to who your mentor for the year will be. They must be able to commit to meeting with you once a month.

**Students entering 11th grade** - Confirmation

**High School**—continued on next page

Registration Time is here for Church School and Confirmation 2022-23!

Summer is almost at an end (can you believe it!), and the lake time, staycations, vacations, fishing, picnics, and other summer activities will soon move aside for our school year routines.

As a Faith Formation Staff, we are planning for the new year with great excitement and can't wait to once again be with the students of Sharon's church school and confirmation.

But first we need to know who you are! It is time to register your students and for volunteers to step forward with their interest in serving.

You may register online at [www.sharonlutheran.org/eventreg](http://www.sharonlutheran.org/eventreg).

Church school is for those children turning 3 years old by July 31, 2022, through 5th graders. Confirmation registration is for students in 6th-10th grade. Eleventh graders will be confirmed this fall, but they do not need to register.

**Ways you can serve as a volunteer in Christian Education:** Sunday/Wednesday church school teacher; Sunday/Wednesday church school assistant; Sunday/Wednesday substitute; Wednesday church school principal; Confirmation group leader; Confirmation assistant; Confirmation substitute; member of the Christian Education Team. *Church school teachers must be in tenth grade or above. Sixth through ninth graders may serve as assistants.*

For more information on any of the above positions or registration, contact Cheryl ([education@sharonlutheran.org](mailto:education@sharonlutheran.org)) for Lambs-5th grade, Dave ([dberger@sharonlutheran.org](mailto:dberger@sharonlutheran.org)) for 6th-8th grades, or Steve ([sdekrey@sharonlutheran.org](mailto:sdekrey@sharonlutheran.org)) for 9th-11th grades.

SUNDAY	MONDAY	TUESDAY	WEDNESDAY	THURSDAY	FRIDAY	SATURDAY
	1 7:00 pm Fellowship Team	2 2:00 pm-8:30 pm Picture Directory sessions (see news-letter for details)  6:00 pm Education & Youth Teams	3 9:45 am Bible Study—South Hall 2:00 pm-8:30 pm Picture Directory sessions (see news-letter for details) 6:00 Worship—Celebration Hall	4 6:30 pm Community Connections Team	5 OFFICE CLOSES AT NOON	6
7 9:00 am Worship—Celebration Hall and Sanctuary 10:30 am Worship—Celebration Hall	8 5:15 pm Evangelism Team	9 5:00 pm Stewardship Team	10 9:45 am Bible Study—South Hall 6:00 pm Outdoor Worship	11 5:00 pm Lay Ministry Team	12 OFFICE CLOSES AT NOON	13
ELCA Churchwide Assembly—Columbus, Ohio						
14 9:00 am Worship—Celebration Hall and Sanctuary 10:30 am Worship—Sanctuary	15 6:30 pm Properties Team  SEPTEMBER NEWSLETTER DEADLINE	16	17 9:45 am Bible Study—South Hall 6:00 pm Worship—Celebration Hall	18	19 OFFICE CLOSES AT NOON	20
21 9:00 am Worship—Celebration Hall and Sanctuary 10:30 am Worship—Celebration Hall	22	23 6:00 pm Church Council	24 9:45 am Bible Study—South Hall 6:00 pm Worship—Celebration Hall	25	26 OFFICE CLOSES AT NOON  Rummage Sale	27
28 9:00 am Worship—Celebration Hall and Sanctuary 10:30 am Worship—Celebration Hall NOISY OFFERING SUNDAY	29	30	31 9:45 am Bible Study—South Hall 6:00 pm Worship—Celebration Hall NOISY OFFERING WEDNESDAY	AUGUST		





## 2022 ELCA CHURCHWIDE ASSEMBLY August 8-12, 2022 Columbus, Ohio

The 2022 ELCA Churchwide Assembly will be held in Columbus, Ohio, Aug. 8-12, at the Greater Columbus Convention Center. We gather under the theme, Embody the Word. There's an importance in the double meaning of the two words:

- Embody, meaning both the incarnation of Jesus Christ and the life of the church emerging from a pandemic.
- Word – both meaning Jesus Christ and scripture

Luke 24:45 states, "Then he opened their minds to understand the scriptures." We embody the Word, both Jesus and the scripture, by speaking it and proclaiming it. In 1522: Martin Luther's translation of the New Testament made the Word accessible to the people and revolutionized the Christian movement worldwide. 500 years later, the call to make Jesus accessible to the people still exists today and as we look to the future of this church.

The ELCA Churchwide Assembly, the primary decision-making body of the church, is a process of

communal spiritual discernment. When the ELCA Churchwide Assembly convenes, its voting members meet with confidence in God's grace around word and water, wine and bread, to carry on their work on behalf of the entire church. Over the course of the assembly, voting members:

- Hear reports and review the work of churchwide officers, leaders and units;
- Receive and consider proposals from synod assemblies;
- Elect officers, board members and other leaders as specified by the constitution or bylaws;
- Establish ELCA churchwide policy;
- Worship together;
- Adopt a budget; and
- Conduct other business related to the ELCA churchwide organization.

All plenary sessions and worship services will be available on livestream at [www.elca.org/CWA-2022](http://www.elca.org/CWA-2022). Pre-Assembly reports are available at [www.elca.org/Resources/Churchwide-Assembly](http://www.elca.org/Resources/Churchwide-Assembly).

## Sharon Book Group

Sharon Lutheran's Book Group will meet at 7:00 pm on the dates below in Celebration Hall and via Zoom

### Summer Read

**September 6, 2022 The Girl with the Dragon Tattoo**

Harriet Vanger, a scion of one of Sweden's wealthiest families disappeared over forty years ago. All these years later, her aged uncle

continues to seek the truth. He hires Mikael Blomkvist, a crusading journalist recently trapped by a libel conviction, to investigate. He is aided by the pierced and tattooed punk prodigy Lisbeth Salander. Together they tap into a vein of unfathomable iniquity and astonishing corruption.



Please note: due to privacy regulations, Altru limits our Pastoral Staff's ability to come and visit you while you are hospitalized. We will not know of your stay unless you or a family member informs us. The patient can ask that the Altru Chaplin to contact us as well.

### High School—continued from previous page

Days are Sunday October 23rd and Wednesday October 26th. Please be prepared on orientation night (August 24th) to sign up for your one on one meeting with a member of the church staff. Please have your Faith Statement written and ready to hand in prior to that meeting. The group picture date will be determined sometime in September. **If you have not made a stole yet, you need to find time**

during church business hours to come in and get that completed.

**ReNew** - ReNew is our High School Youth Group for grades 9-12 and will resume regular Wednesday meetings on September 7th at 8:15pm. We are looking for volunteers to be present during this time. If you are a young adult between the ages of 21-35 please contact Steve to be a part of this.

## Many volunteer opportunities at this year's rummage sale!

Join in the fun and volunteer to help at the Rummage Sale! Volunteers are able to shop and make purchases before the sale begins on Friday!

We are looking for volunteers to direct donators to which room they should take their donations at drop-off, set up the sale, pricing items and working the day of the sale.

We will need volunteers for the following times:

Sunday, Aug 21 starting at 5 pm until we have the tables and basic set up complete

Monday, Aug 22 10 am - 6 pm

Tuesday, Aug 23 10 am - 7 pm

Wednesday, Aug 24 10 am - 7 pm

Thursday, Aug 25 10 am until we are all ready for the sale on Friday

Friday, Aug 26 6:30 am until approximately 7 pm

Watch for sign-up sheets at the Welcome Center and on Sign-up Genius!

The Rummage Sale proceeds are used to maintain and improve Our Sharon Lutheran Church Home. Please volunteer to be part of this fun endeavor!

"Wherever you go, no matter what the weather, always bring your own sunshine." - Anthony J. D'Angelo, Author



Only two months —  
yes, just two — until  
**LEFSE MAKING begins!!!**

Can't wait to see you  
all again!

~Kristi, Mary, Sharla, Sherryl

It's that time of year to start collecting school supplies for Lutheran World Relief. The following items are needed for 1 school kit:

- 1 drawstring bag
- 1 box of crayons 16 or 24 count
- 4 – 70 sheet notebooks
- 1 – pencil sharpener
- 1 – 30 centimeter ruler
- 1 – blunt scissors
- 5 - unsharpened #2 pencils
- 5 – black or blue ballpoint pens
- 1 – 2 ½” eraser

These items can be left in the carts by the elevator.

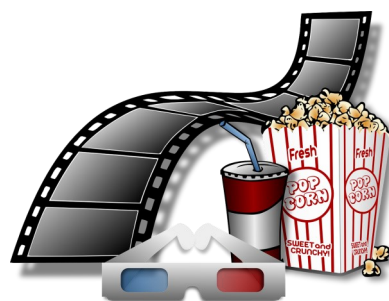
Thank you from the Community Connections Team.



## Let's go back to the movies!

Our Faith in Film group is starting to go back to the movies.

If you are interested in seeing a movie in the afternoons once a month, going out for a meal afterwards, and enjoying good fellowship, please contact Vicki at 701-757-0928 (Home) or email her at [vlindberg@midco.net](mailto:vlindberg@midco.net).



## ELCA World Hunger

Your gifts to ELCA World Hunger support programs in 67 countries around the world. Working with global companion churches and trusted partners around the world, ELCA World Hunger dedicates approximately \$8,000,000 each year to sustainable-development-related projects.

In Tanzania, agricultural innovations, emergency preparedness training and irrigation improvements help communities become more resilient. In Nepal, an animal husbandry project helps dairy herders increase their cows' milk production so they have more milk to feed their families or to sell to others in need. Here in the United States, gardens and farms help provide food-insecure families with healthy foods while building community among neighbors.

Read more about ELCA World Hunger at <https://www.elca.org/hunger>.

## Need something to do as the summer wanes?

Both libraries at Sharon are open during business hours and before and after all worship services. Both libraries offer a variety of topics from history to self-help to fiction to nonfiction to Christian living, and lots more! There is no check out for either—just choose some books to take home and bring them back when you're ready! Or, sit in the library and read.

The adult library is located just inside Door #1, second door on your right. The children's library is down the hall on the left as you enter Door #1, to the far end on the right. All ages from 0—100+ can find some reading entertainment.

## Lutheran Disaster Response

Russia's invasion of Ukraine in February 2022 quickly escalated into a war and humanitarian crisis. Working with our faith partners through Lutheran Disaster Response, the ELCA is supporting refugees, internally displaced individuals and others impacted by the crisis. That support includes emergency shelter, food and clean water, protection for vulnerable individuals, psychosocial care, pastoral support, gender justice, and prevention of sexual exploitation.

Read more about the work of Lutheran Disaster Response at <https://elca.org/Resources/Lutheran-Disaster-Response>.

## Summer Splash continues

Pick up a specially-marked envelope from the display in the narthex and return a special offering to the office this summer to help us meet our Summer Stewardship goal of \$7,500.

If no envelopes are available, please mark your check as "Summer Stewardship" so we can make sure it is credited to the correct line item. Thank you!

# Join us for Outdoor Worship

Wednesday, August 10  
at 6:00 pm

**The Evangelism Team will be organizing a meal and outdoor activities before and after the outdoor worship!**

**We will have pizza and beverages in South Hall starting at 5:15pm and outdoor games. (Rumor has it there may be a bouncy house...)**

## The Somethings 20's & 30's Ministry

Sharon's young adult ministry is done in partnership with ELCA congregations in the GF area.

**Stay tuned for Young Adult Ministry opportunities coming this summer and fall. Follow our social media to keep up to date!**